

HGP Open Part Number	Schematic Drawing #	Approx Weight (LBS)
HGP0008AW0S000#	29597-TS	41
HGP0008AW0C000#	29597-T	45
HGP0008AW0C*00#	29597-PQ2	48

HGP Part Number	HorsePower (HP)	kVar	Harmonic	Voltage (V)	Hz.	Phase
HGP0008AW----	7.5	3	5th	480	60	3

HGP Eclosed Type 1 Part Number	Schematic Drawing #	Approx Weight (LBS)
HGP0008AW1S000#	29597-TS	66
HGP0008AW1C000#	29597-T	70
HGP0008AW1C*00#	29597-PQ2	72

**\*=Communication Option**  
**#=Mechanical Option**

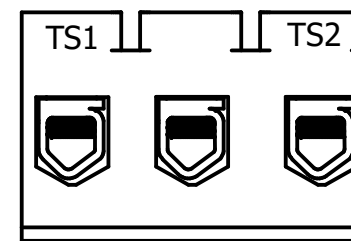
**\*=Communication Option**  
**#=Mechanical Option**

Note: For Torque Information See IOM Manual

Customer Connections.  
L1, T1, L2, T2, L3, T3  
Wire Range: 18 AWG to 4 AWG.

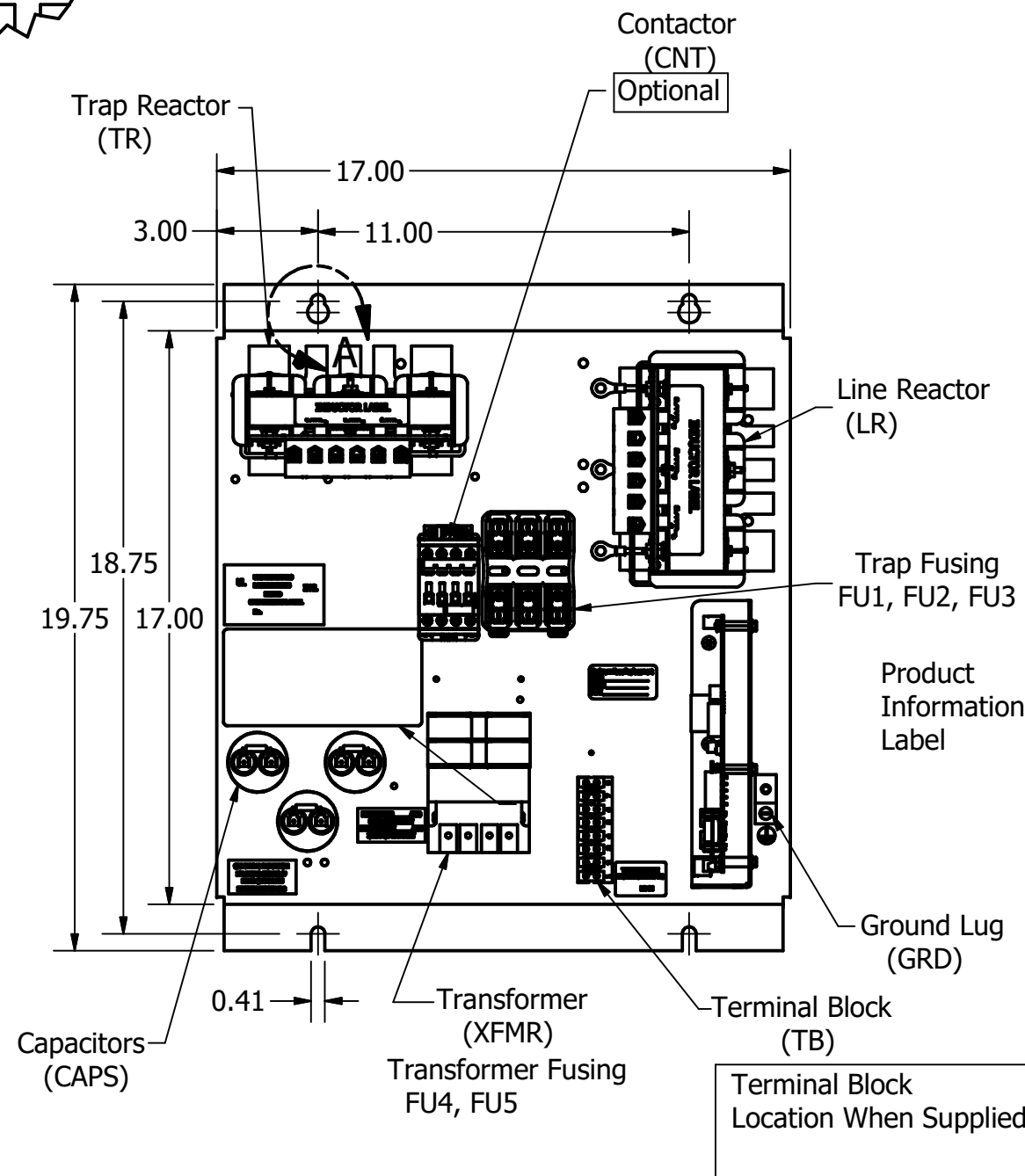
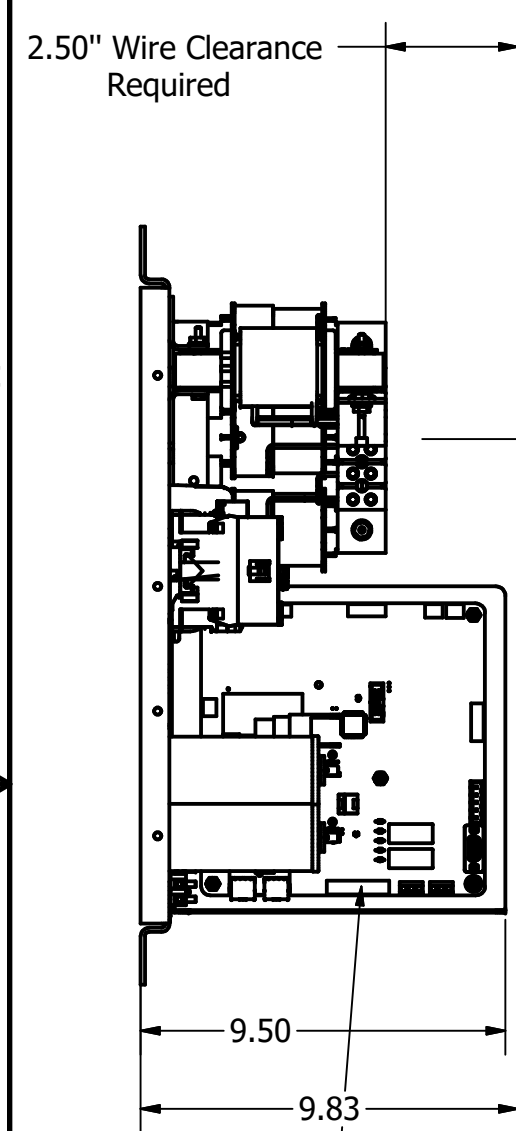
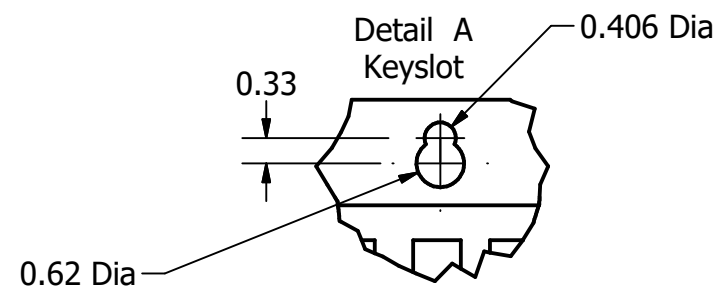
Ground Lug  
Wire Range: 1/0 to 14 AWG.

Thermal Switch Terminal Block (Optional)

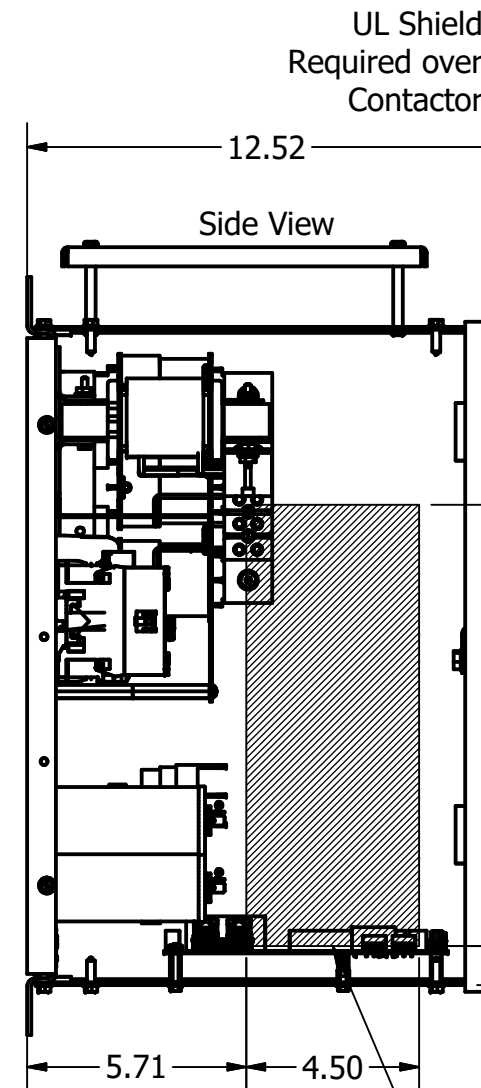


Wire Range: 18 AWG To 4 AWG.  
Torque: 20 LB-IN (2.3 Nm)

Switch Opens on Temperature Rise  
Contact Rating: 6A @ 120 VAC, Resistive  
Contact Rating: 5A @ 120 VAC, Inductive

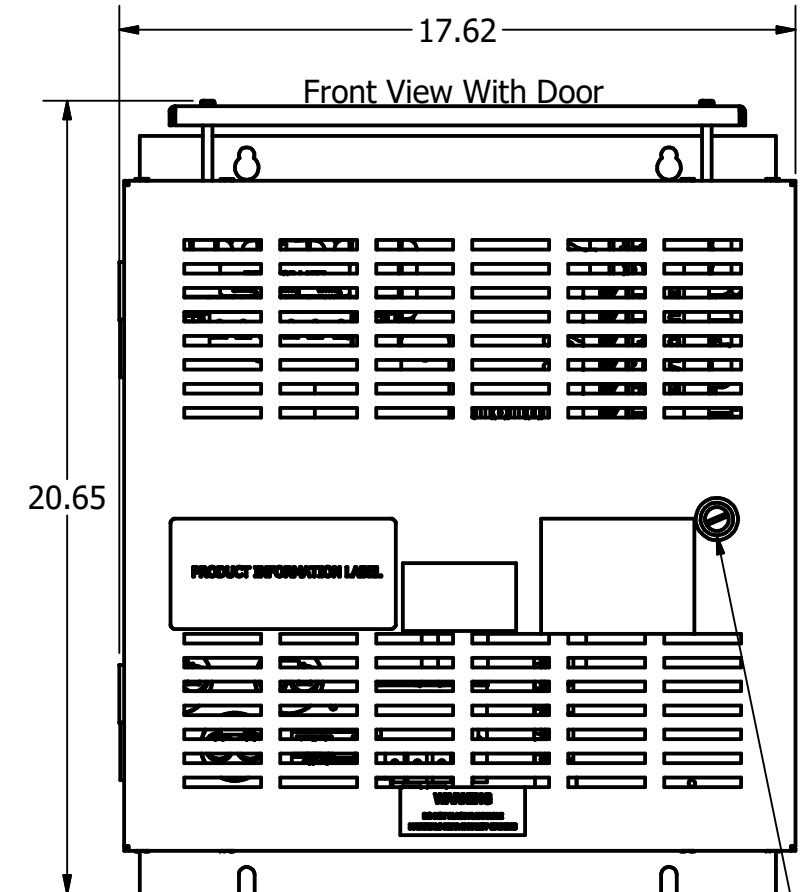
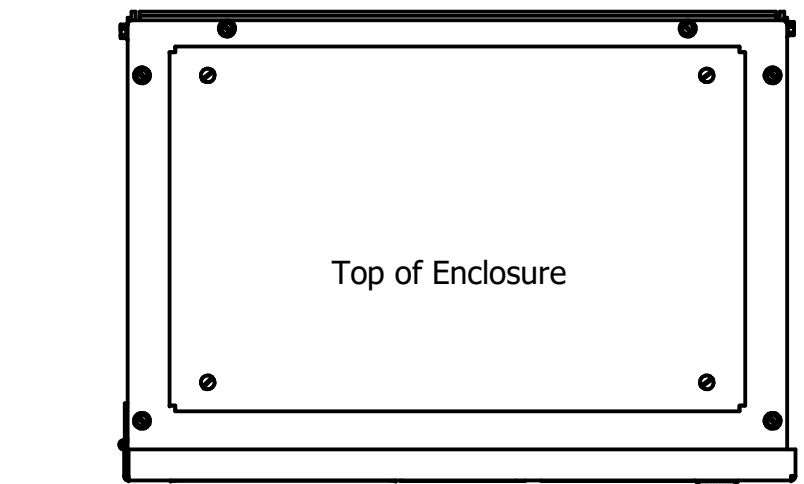
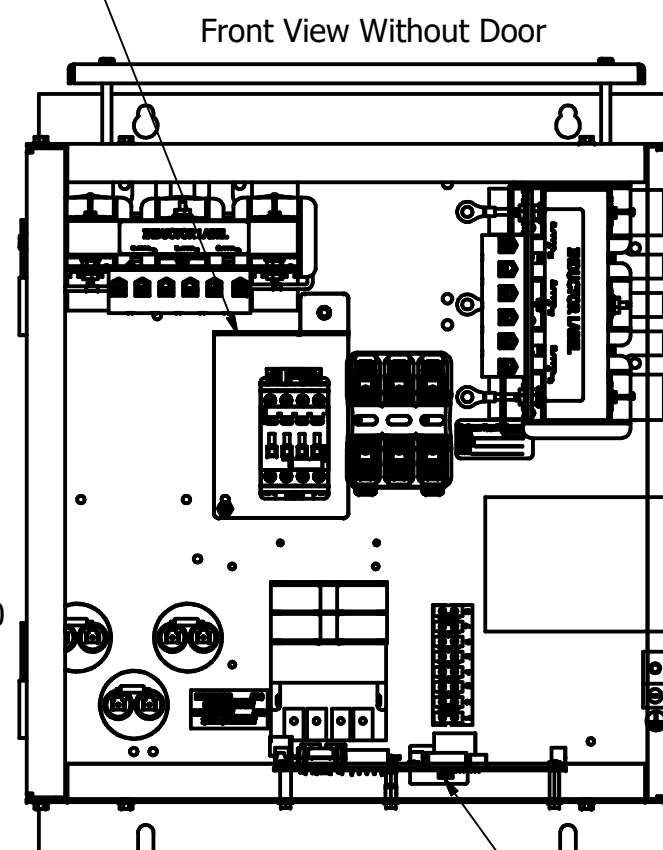


Terminal Block Location When Supplied

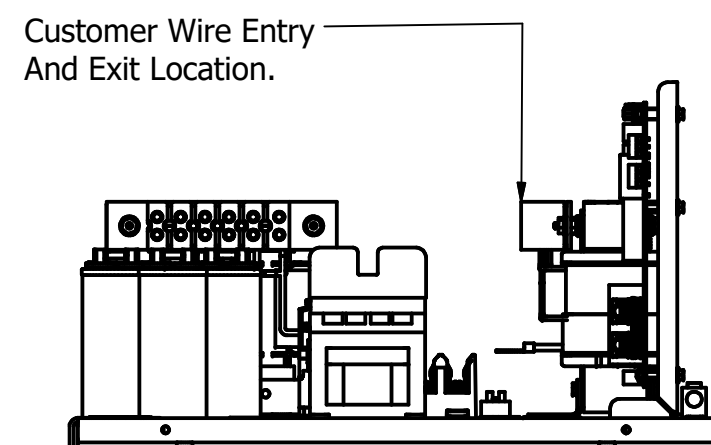
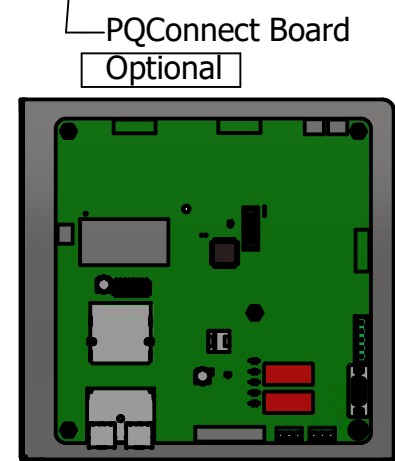
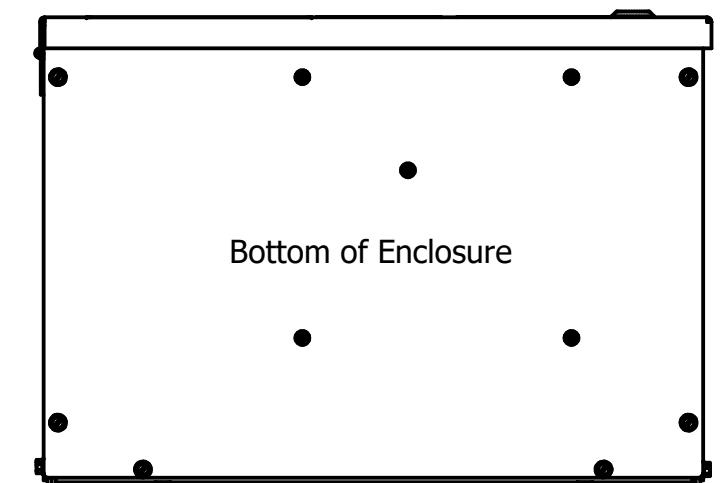


UL Shield Required over Contactor.

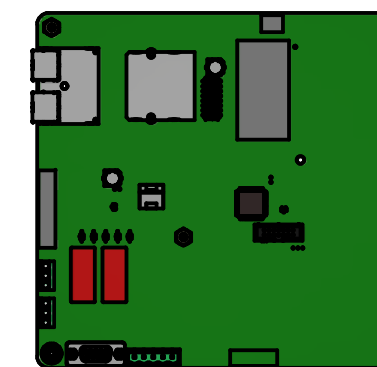
Suggested Area, For Customer Wire Entry And Exit Location.



1/4 Turn Latch 1 Place.



Note: Customer is responsible for proper cooling of filter components on open panels. Capacitors Maximum Ambient 50°C.



PQConnect Board Mounted on bottom of Enclosure. Optional

Components	HGP0008AW----		
	0S000#/1S000#	0C000#/1C000#	0C*00#/1C*00#
Line Reactor (LR)	X	X	X
Trap Reactor (TR)	X	X	X
Capacitor (Cap)	X	X	X
Trap Fusing, FU1, FU2, FU3	X	X	X
Contactor (CNT)		X	X
Transformer (XFMR)		X	X
XFMR Fusing, FU4, FU5		X	X
PQConnect Board			X

**\*=Communication Option**  
**1= PQconnect w/Modbus RTU over RS485**  
**2= PQconnect w/Ethernet IP**

**#=Mechanical Option**  
**0= No Option**  
**V= Vibration Pads**  
**T= Thermal Switches**

Customer Is Responsible For Installation to Meet All National And Local Electrical Codes.

Material(s) Shall be RoHS Compliant

THE INFORMATION AND DESIGNS CONTAINED IN THIS DRAWING ARE CONFIDENTIAL AND THE PROPRIETARY PROPERTY OF ALLIED MOTION TECHNOLOGIES INC. AND ITS SUBSIDIARIES. NEITHER THIS DESIGN NOR ANY INFORMATION CONTAINED IN THIS DRAWING MAY BE REPRODUCED OR DISCLOSED TO OTHERS WITHOUT THE EXPRESS WRITTEN CONSENT OF ALLIED MOTION TECHNOLOGIES INC. AND ITS SUBSIDIARIES.

NO	REVISION	DATE	BY	TOLERANCES (EXCEPT AS NOTED)
I	7033 Update LR Position	04/29/25	JRN	DECIMAL
H	6024, Add PQ/Mech Options	7/31/2023	DSW	.XX ± .25 .XXX ± .10
G	6268, KDRE2TT Updated	5/12/2023	DSW	FRACTIONAL ± 1/16
F	5599-1, CNT GE to ABB	5/19/2021	DSW	ANGULAR ± 1°
E	5180 Updated XFMR Wiring	04/02/20	JRN	

**TCL** W132N10611 Grant Drive  
Germantown, WI 53022  
© 2023 TCL, LLC  
An Allied Motion Company  
HarmonicGuard Passive, HGP0008AW----  
HGP, 7.5HP, 480/3/60, Open and Type 1.  
DRN BY DSW DATE 11/1/13 105477DG  
SCALE 1/8 APRVD: SIZE C SHT 1 OF 1